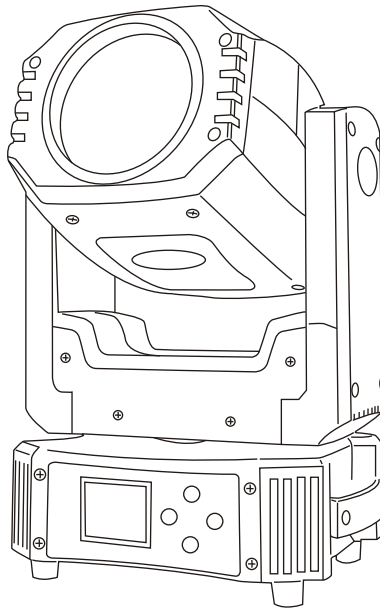


# SI-208 QSPOT 90



CE   IP20 LED  0.2m  t<sub>a</sub> 40°C t<sub>c</sub> 150°C

# User Manual

KEEP THIS MANUAL FOR FUTURE NEEDS

# 1

## **SAFETY INSTRUCTIONS**



### **CAUTION**

Becareful with your operations. With a dangerous voltage you can suffer a dangerous electric shock when touching wires!

This device has left the factory in perfect condition. In order to maintain this condition and to ensure a safe operation, it is absolutely necessary for the user to follow the safety instructions and warning notes written in this user manual.



### **IMPORTANT**

Damages caused by the disregard of this user manual are not subject to warranty. The dealer will not accept liability for any resulting defects or problems.

If the device has been exposed to temperature changes due to environmental changes, do not switch it on immediately. The arising condensation could damage the device. Leave the device switched off until it has reached room temperature.

This device falls under protection-class I. Therefore it is essential that the device be earthed.

The electric connection must carry out by qualified person.

The device shall only be used with rated voltage and frequency.

Make sure that the available voltage is not higher than stated at the end of this manual.

Make sure the power cord is never crimped or damaged by sharp edges. If this would be the case, replacement of the cable must be done by an authorized dealer.

Always disconnect from the mains, when the device is not in use or before cleaning it. Only handle the power cord by the plug. Never pull out the plug by tugging the power cord.

During initial start-up some smoke or smell may arise. This is a normal process and does not necessarily mean that the device is defective, it should decrease gradually.

Please don't project the beam onto combustible substances.

Fixtures cannot be installed on combustible substances, keep more than 50cm distance with wall for smooth air flow, so there should be no shelter for fans and ventilation for heat radiation.

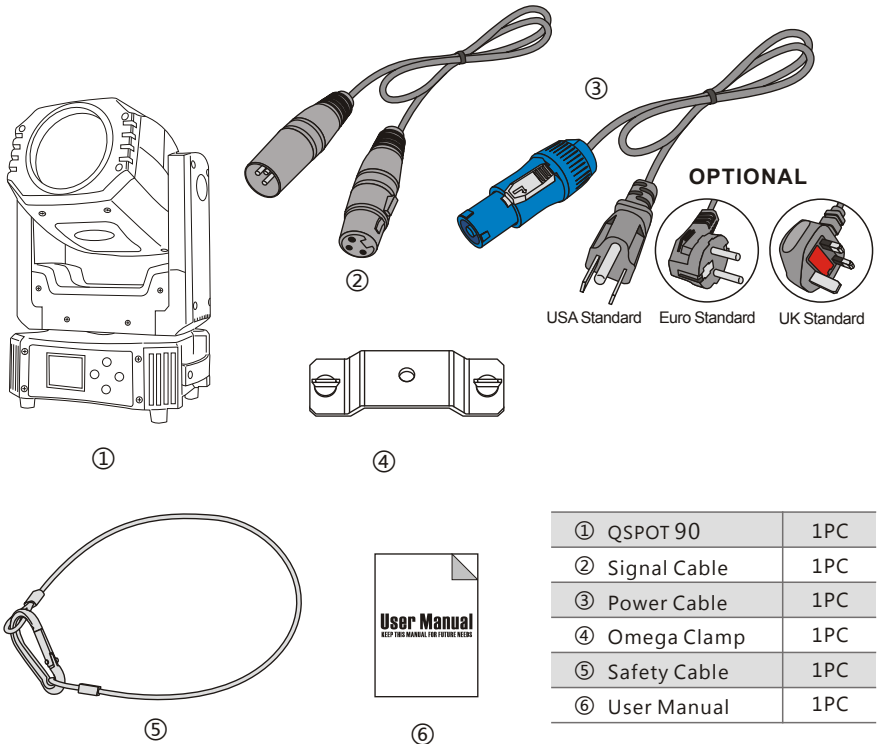
If the external flexible cable or cord of this luminaire is damaged, it shall be exclusively replaced by the manufacturer or his service agent or a similar qualified person in order to avoid a hazard.

## 2 UNPACKING

Thank you for choosing our QSPOT 90. For your own safety, please read this manual before installing the device. This manual covers the important information on installation and applications. Please install and operate the fixture with following instructions. Meanwhile, please keep this manual well for future needs.

The QSPOT 90 is made of a new type of high temperature strength of engineering plastics and cast aluminum casing with nice outlook. The fixture is designed and manufactured strictly following CE standards, complying with international standard DMX512 protocol. It's available independently controlled and linkable with each other for operation. And it is applicable for large-scale live performances, theater, studio, nightclubs and discos.

The QSPOT 90 adopts 1PCS 90W LEDs which features high brightness and stability. Please carefully unpack it when you receive the fixture and check whether it is damaged during the transportation. And please check whether the following items are included inside the box:



① QSPOT 90	1PC
② Signal Cable	1PC
③ Power Cable	1PC
④ Omega Clamp	1PC
⑤ Safety Cable	1PC
⑥ User Manual	1PC

# 3

## **FEATURES & SPECIFICATIONS**

### **Features**

- A 90W white LED lamp, 7500K
- 50000 hours life span and low power consumption
- 8/16 bit smooth and precise resolution for PAN/TILT movement
- 540° PAN and 260° TILT movement
- PAN/TILT inversion available
- Scan position memory, auto reposition after unexpected movement
- Specific high precision glass optic system with 12° projection angle
- Improved optics and flat beam field
- 1 Rotatable gobo wheel with 6 rotatable and interchangeable gobos plus open with speed adjustable, stream effect, dithering effect and rotatable clockwise or anticlockwise
- 1 Static gobo wheel with 7 gobos plus open
- 1 Color wheel with 7 colors plus open
- Variable direction rainbow effect with speed adjustable
- 3-Facet prism with variable speed and direction
- 0-100% smooth linear LED dimmer
- 25T/sec high speed LED shutter/strobe effect with variable speed
- Preset variable/random strobe and dimming pulse effect
- 12/13/15 DMX channels USITT DMX-512
- DMX512, master-slave, and sound activated controllable or auto operation
- 2.0" High resolution TFT LCD display with 4 light-touch control buttons
- POWRECON connector IN/OUT
- 3-Pin XLR connectors IN/OUT
- High efficiency and low noise cooling system
- -25°C-45°C max ambient temperature
- IP20 protection rating
- 55dB at 3'dB rating
- 1\*1/4 turn fastening Omega clamp
- 1\*Safety attachment point

## Specifications

Input Voltage: AC100-240V 50/60Hz

LED Quantities: 1\*90W white LED

Control Signal: DMX512, master-slave and sound activated or auto operation

Control Channel: 12/13/15 DMX channels USITT DMX-512

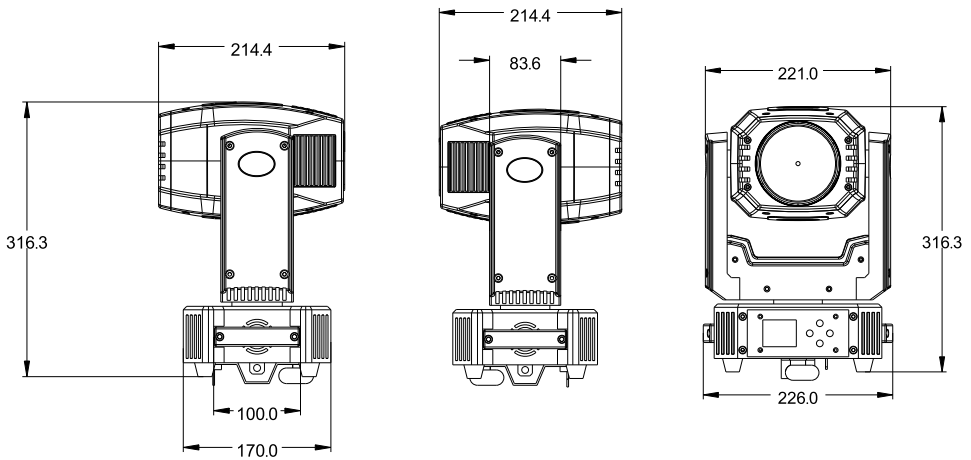
Power Consumption: 135W

Dimensions: 170(D)\*226(W)\*362(H)mm

Packing Dimensions: 280(D)\*295(W)\*385(H)mm

Net Weight: 7.34kg

Gross Weight: 9.34kg



Rotating gobos



Static gobos

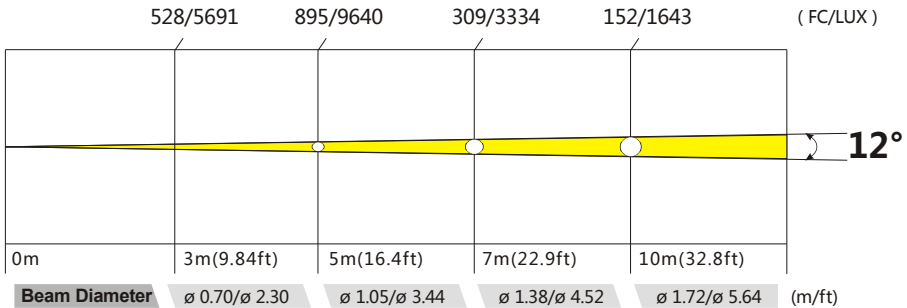


Colors



## 4 PHOTOMETRIC DATA

**Photometric Beam Angle Data** 12° Beam Angle  $LUX \times 0.0929 = FC$



## 5 OPERATION INSTRUCTIONS

- The QSPOT 90 is for wash effect for on-site decoration purpose.
- Don't turn on the fixture if it's been through severe temperature difference like after transportation because it might damage the light due to the environment changes. So make sure to operate the fixture until it is in normal temperature.
- This light should be keep away from strong shaking during any transportation or movement.
- Don't pull up the light by only the head, or it might cause damages to the mechanical parts.
- Don't expose the fixture in overheat, moisture or environment with too much dust when installing it. And don't lay any power cables on the floor. Or it might cause electronic shock to the people.
- Make sure the installation place is in good safety condition before installing the fixture.
- Make sure to put the safety chain and check whether the screws are screwed properly when installing the fixture.
- Make sure the lens are in good condition. It's recommended to replace the units if there are any damages or severe scratch.
- Make sure the fixture is operated by qualified personnel who knows the fixture before using.
- Keep the original packages if any second shipment is needed.
- Don't try to change the fixtures without any instruction by the manufacturer or the appointed repairing agencies.
- It is not in warranty range if there are any malfunctions from not following the user manual to operate or any illegal operation, like shock short circuit, electronic shock, lamp broke, etc.

## **6** **INSTALLATIONS**

**Cautions:** For added protection mount the fixtures in areas outside walking paths, seating areas, or in areas where the fixture might be reached by unauthorized personnel.

Before mounting the fixture to any surface, make sure that the installation area can hold a minimum point load of 10 times the device's weight.

Fixture installation must always be secured with a secondary safety attachment, such as an appropriate safety cable.

Never stand directly below the device when mounting, removing, or servicing the fixture.

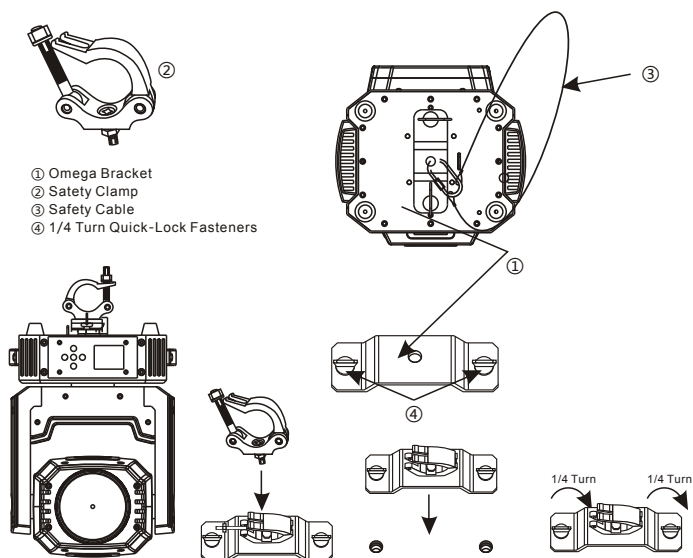
from a ceiling, or set on a flat level surface (see illustration below). Be sure this fixture is kept at least 0.5m (1.5 ft) away from any flammable materials (decoration etc.).

Always use and install the supplied safety cable as a safety measure to prevent accidental damage and/or injury in the event the clamp fails.

**Mounting points:** Overhead mounting requires extensive experience, including amongst others calculating working load limits, a fine knowledge of the installation material being used, and periodic safety inspection of all installation material and the fixture. If you lack these qualifications, do not attempt the installation yourself. Improper installation can result in bodily injury.

Be sure to complete all rigging and installation procedures before connecting the main power cord to the appropriate wall outlet.

**Clamp Mounting:** The QSPOT 90 provides a unique mounting bracket assembly that integrates the bottom of the base, and the safety cable rigging point in one unit (see the illustration below). When mounting this fixture to truss be sure to secure an appropriately rated clamp to the included omega bracket using a M10 screw fitted through the center hole of the "omega bracket". As an added safety measure be sure to attached at least one properly rated safety cable to the fixture using one of the safety cable rigging point integrated in the base assembly.



Regardless of the rigging option you choose for your QSPOT 90, always be sure to secure your fixture with a safety cable. The fixture provides a built-in rigging point for a safety cable on the hanging bracket as illustrated above. Be sure to only use the designated rigging point for the safety cable and never secure a safety cable to a carrying handle.

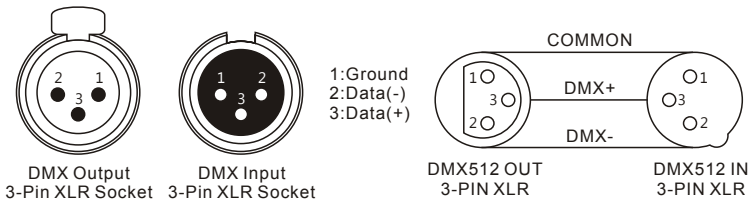
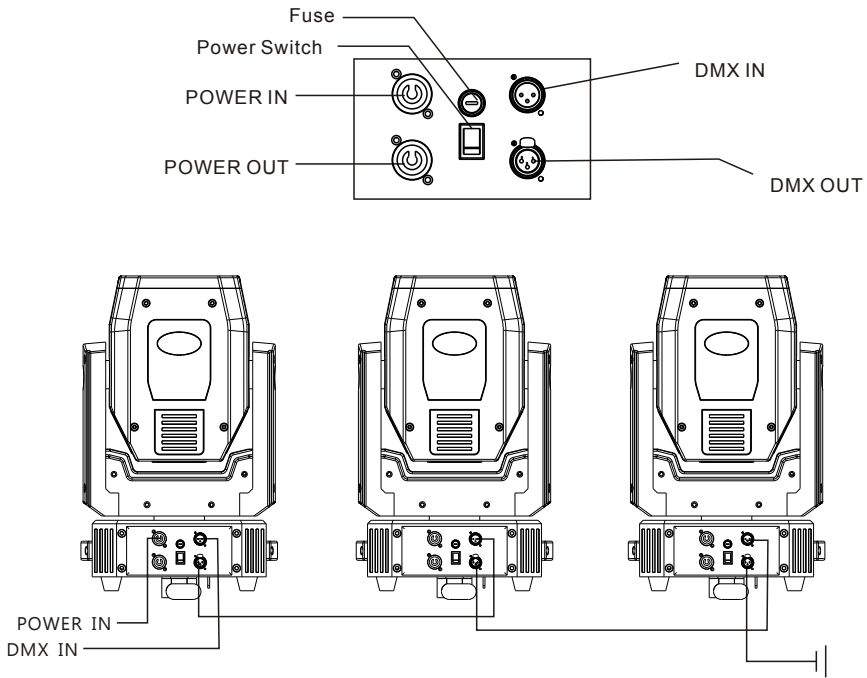


# 7 DMX-512 CONTROL CONNECTIONS

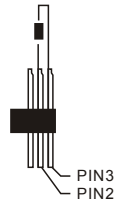
Connect the provided XLR cable to the female 3-pin XLR output of your controller and the other side to the male 3-pin XLR input of the moving head. You can chain multiple

Moving head together through serial linking. The cable needed should be two core, screened cable with XLR input and output connectors. Please refer to the diagram below.

DMX-512 connection with DMX terminator

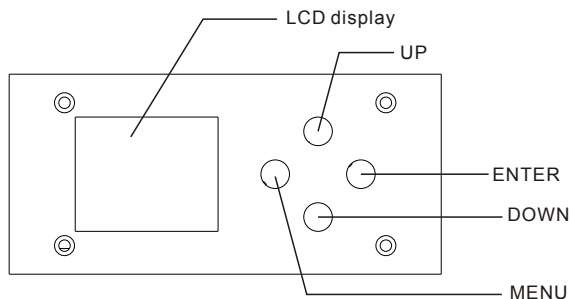


For installations where the DMX cable has to run a long distance or is in an electrically noisy environment, such as in a discotheque, it is recommended to use a DMX terminator. This helps in preventing corruption of the digital control signal by electrical noise. The DMX terminator is simply an XLR plug with a  $120\ \Omega$  resistor connected between pins 2 and 3, which is then plugged into the output XLR socket of the last fixture in the chain. Please see illustrations below.



## 8 MENU OPERATIONS

MENU	Address mode	Address=***	
		**CH DMX	
		Auto (Alone)	
		Auto (Master)	
		Sound (Alone)	
		Sound(Master)	
	Language	Chinese	
		English	
		France	
		Spanish	
	Lamp	Lamp OFF	
		Lamp ON	
		Reset time	
	Reset	Reset =No	
		Reset=Yes	
	Option	Pan/Tilt blackout	Off/On
		Lamp on by power	Off/On
		Lamp on by power	Off/On
		Shortcut ON/OFF	Off/On
		DMX lost set	Off/On
		Display reverse	Off/On
		Display delay OFF	Off/On
		Reset default	No/Yes
	Setup	Password	008
		Calibration	Pan
			Tilt
			Color
			Gobo
			Prism 1
			Prism 2
			Frost
			Focus
			Dimmer
	Information	Mic Sensitivity	
		1.Temperature=***C	
		2.Lamp time=*****H	
		3.ID=*****	
		4.Version=*.***	



## 9 DMX CHANNELS

Mode/Channel			Function	Values	Description
M1	M2	M3			
1	1	1	Pan	0-255	0%-100%
		2	Pan fine	0-255	0%-100%
2	2	3	Tilt	0-255	0%-100%
		4	Tilt fine	0-255	0%-100%
	3	5	Pan&Tilt speed	0-225	Pan&Tilt Speed from fast to slow
				226-235	Black out ( Pan/Tilt movement )
				236-245	Black out ( Gobo/Color change )
				246-255	No function
3	4	6	Dimmer	0-9	Closed
				10-255	Dimmer from 0%-100%
4	5	7	Strobe	0-31	No function(Black)
				32-63	Open
				64-95	Strobe from slow to fast
				96-127	Open
				128-143	Strobe from slow to fast
				144-159	Strobe from fast to slow
				160-191	Open
				192-223	Random strobe from slow to fast
				224-255	Open
5	6	8	Color Wheel 7+1	0-10	White
				11-23	Color 1
				24-36	Color 1 + Color 2
				37-49	Color 2
				50-62	Color 2 + Color 3
				63-75	Color 3
				76-88	Color 3 + Color 4
				89-101	Color 4
				102-114	Color 4 + Color 5
				115-127	Color 5
				128-140	Color 5 + Color 6
				141-153	Color 6
				154-166	Color 6 + Color 7
				167-179	Color 7
				180-217	Color forward rotation from slow to fast
				218-255	Color backward rotation from slow to fast
6	7	9	Gobo Wheel 8+1	0-10	White
				11-25	Gobo 1
				26-40	Gobo 2
				41-55	Gobo 3

6	7	9	Gobo	56-70	Gobo 4
				71-85	Gobo 5
				86-100	Gobo 6
				101-115	Gobo 7
				116-130	Gobo 8
				131-140	Shake from slow to fast: gobo 1
				141-150	Shake from slow to fast: gobo 2
				151-160	Shake from slow to fast: gobo 3
				161-170	Shake from slow to fast: gobo 4
				171-180	Shake from slow to fast: gobo 5
				181-190	Shake from slow to fast: gobo 6
				191-200	Shake from slow to fast: gobo 7
				201-210	Shake from slow to fast: gobo 8
				211-232	Rotation from fast to slow
				233-255	Rotation from slow to fast
7	8	10	Rotation gobo wheel	0-10	White
				11-40	Gobo 1
				41-70	Gobo 2
				71-100	Gobo 3
				101-130	Gobo 4
				131-160	Gobo 5
				161-190	Gobo 6
				191-222	Rotation from fast to slow
8	9	11	Gobo rotation	223-255	Rotation from slow to fast
				0-127	Position indel 0-540 angle degree
				128-190	Rotation from fast to slow
				191-192	Stop
9	10	12	Prism	193-255	Rotation from slow to fast
				0-127	Prism excluded
10	11	13	Prism rotation	128-255	Prism inserted
				0-127	Position indel 0-540 angle degree
				128-190	Rotation from fast to slow
				191-192	Stop
11	12	14	Focus	193-255	Rotation from slow to fast
				0-255	0%-100%
12	13	15	Function (>3sec)	0-24	Empty
				25-49	Reset:effects
				50-74	Empty
				75-99	Reset:complete
				100-124	Empty
				125-149	Reset:sound control
				150-174	Empty
				175-199	Lamp off
				200-224	Empty
				225-255	Lamp on

## **10 MAINTENANCE AND CLEANING**

The following points have to be considered during the inspection:

- 1) All screws for installing the devices or parts of the device have to be tightly connected and must not be corroded.
- 2) There must not be any deformations on the housing, color lenses, fixations and installation spots (ceiling, suspension, trussing).
- 3) Mechanically moved parts must not show any traces of wearing and must not rotate with unbalances.
- 4) The electric power supply cables must not show any damage, material fatigue or sediments.

Further instructions depending on the installation spot and usage have to be adhered by a skilled installer and any safety problems have to be removed.



### **CAUTION**

Disconnect from mains before starting maintenance operations



In order to make the lights in good condition and extend the life time, we suggest a regular cleaning to the lights.

- 1) Clean the inside and outside lens each week to avoid the weakness of the lights due to accumulation of dust.
- 2) Clean the fan each week.
- 3) A detailed electric check by approved electrical engineer each three month, make sure that the circuit contacts are in good condition, prevent the poor contact of circuit from overheating.

We recommend a frequent cleaning of the device. Please use a moist, lint- free cloth. Never use alcohol or solvents.

There are no serviceable parts inside the device. Please refer to the instructions under "Installation instructions".

Should you need any spare parts, please order genuine parts from your local dealer.





**ADD** 3rd Floor, No. 288, Guangzhu East Line, Pingwen, Lanhe Town, Nansha District, Guangzhou, China

**Tel.** +86 20 8499 2310/2320/2330

**Fax** +86 20 8499 2360

**E-mail** info@color-imagination.com

**Website** www.color-imagination.com

Follow  
us on



[www.facebook.com/color.imagination.1](http://www.facebook.com/color.imagination.1)



[www.youtube.com/user/colorimaginationj](http://www.youtube.com/user/colorimaginationj)



[twitter.com/colorimaginej](http://twitter.com/colorimaginej)